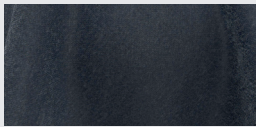
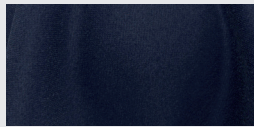


# Sensuous FR

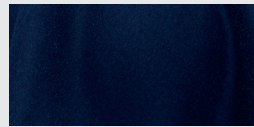
# Dekorationsstoff decoration fabric



shark 2592-13 140 cm



storm 2592-20 140 cm



cobalt 2592-37 140 cm



ink 2592-44 140 cm



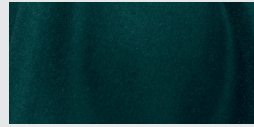
petrol 2592-51 140 cm



mineral 2592-68 140 cm



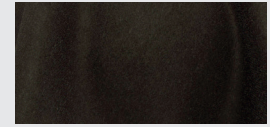
lagoon 2592-75 140 cm



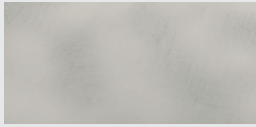
dragonfly 2592-82 140 cm



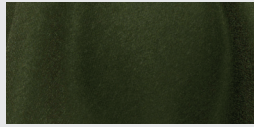
peacock 2592-99 140 cm



scuba 2593-05 140 cm



khaki 2593-12 140 cm



forest 2593-29 140 cm



fern 2593-36 140 cm



olive 2593-43 140 cm



moss 2593-50 140 cm



titanium 2593-67 140 cm



earth 2593-74 140 cm



nougat 2593-81 140 cm



dune 2593-98 140 cm



fog 2594-04 140 cm



gull 2594-11 140 cm



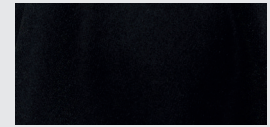
pavement 2594-28 140 cm



concrete 2594-35 140 cm



slate 2594-42 140 cm



raven 2594-59 140 cm



port 2594-66 140 cm



vino 2594-73 140 cm



lipstick 2594-80 140 cm



terra 2594-97 140 cm



blush 2595-03 140 cm

# Sensuous FR

# Dekorationsstoff

decoration fabric

<b>Name</b> name	Sensuous FR	<b>Schwerentflammbarkeit</b> flame resistance	DIN 4102 B1
<b>Artikelnummer</b> article number	2592 - 2595	<b>Lichtechtheit</b> lightfastness	5
<b>Anzahl Farben</b> number of colourways	30	<b>IMO</b>	A471 A652
<b>Höhe/Breite</b> height/width	ca. 140 cm	<b>Einsprung</b> shrinkage	ca. 0 - 0,5%
<b>Rapport horizontal</b> repeat horizontal	---	<b>Martindale</b> martindale	ca. 82.500 Touren ca. 82.500 rubs 
<b>Rapport vertikal</b> repeat vertical	---	<b>Beschwerungsband</b> weight band	nein no
<b>Gewicht</b> weight	ca. 540 g/lfm	<b>Schallabsorption</b> sound absorption	DIN ISO 11654 $\alpha_w = 0,85$ (B)
<b>Komposition</b> composition	54% rec. Polyester (PES) FR, 46% Polyester (PES) FR	<b>Pflege</b> care labeling	    



shark  
2592-13  
140 cm